

# Bendigo Fields Country Club



**BENDIGO FIELDS**  
COUNTRY CLUB





The background is a collage of three photographs. On the left, a man and a woman are walking hand-in-hand on a path covered with fallen autumn leaves, with trees showing vibrant fall foliage in the background. On the right, there are two overlapping photos of women. The top one shows a woman with short blonde hair smiling broadly. The bottom one shows a woman with short grey hair, also smiling, while holding a paintbrush and working on a white ceramic object decorated with colorful pom-poms. Another woman is partially visible behind her, also smiling.

# Your Journey to a New Lifestyle

## Belong to a Community

Make new friends and get involved in activities and social groups, doing as much or as little as you like. There are many activities to choose from at a Country Club Living Community.

Depending on your interests, and because you'll have like-minded people around you, you'll have plenty of neighbours close by with common interests.

Our residents often say they feel a strong sense of belonging to the village community.





# Offering Flexibility & Lifestyle Choices

Country Club Living not only offers a range of exciting activities and resort style facilities to enjoy, but also the flexibility of how you live. Our homes provide a range of choice in terms of size and style.

The heightened security and passive surveillance provide a great lock up and leave opportunity. Residents can choose from multiple lifestyle options and for those that enjoy traveling, our low maintenance living is ideal.

There's on-site village management, a helping hand for those that need it every now and again and of course, you'll always have the wonderful caring support of the village community.

Our independent living communities ensure you maintain your privacy and "me time" to live the way you desire.



## Health & Happiness

In addition to being more physically secure in one of our over 55s communities, your overall physical and mental wellbeing will also benefit.

Our wellbeing and activity programs make it easier for you to enjoy physical and passive activities and embrace social opportunities. Country Club Living's Wellbeing Co-ordinator works with the live-in village managers to organise events, information sessions and engage service providers to enhance independence, improve resident wellbeing, personal safety and quality of life in later years.

So, you will not only enjoy the retirement lifestyle you deserve...you will enjoy it for longer! Research tells us the average village resident is two years older before they receive in-home care services and can live independently in their own home for up to 5 years longer.





# Village Plan

“ From Activities to Amenities,  
We Have It All ”

## Your Own Private Golf Course

Bendigo Fields Country Club for Over 55s will have its own private golf course for exclusive use of residents and their personal guests, a popular feature at some of our other retirement villages. But the lifestyle here is not just for golfers... everyone can enjoy a range of premium facilities and social amenities.



Not to scale. Floor plans and illustrations are intended as a visual aid and are indicative only. Plans are subject to change and minor variations, including lot to lot landscape variations.



RELAXATION LOUNGES



DINING AREA



CLUB BARS



BILLIARDS



LIBRARY



THEATRE



CRAFT ROOM



HAIRDRESSING SALON



INDOOR LAP POOL



HYDROTHERAPY POOL



EXERCISE FACILITIES



BOWLING GREEN



PRIVATE 9 HOLE  
GOLF COURSE



WALKING TRACKS



PICKLE BALL COURT



CROQUET GREEN



BBQ AREA



HOBBY WORKSHOP



COMMUNITY VEGETABLE  
GARDENS



CARAVAN STORAGE



COUNTRY CLUB BUS



PET FRIENDLY POLICY



24HR EMERGENCY  
CALL SYSTEM



ON-SITE – LIVE IN  
MANAGERS

\*Facilities may vary pending location







# Jasmine



# Kingston

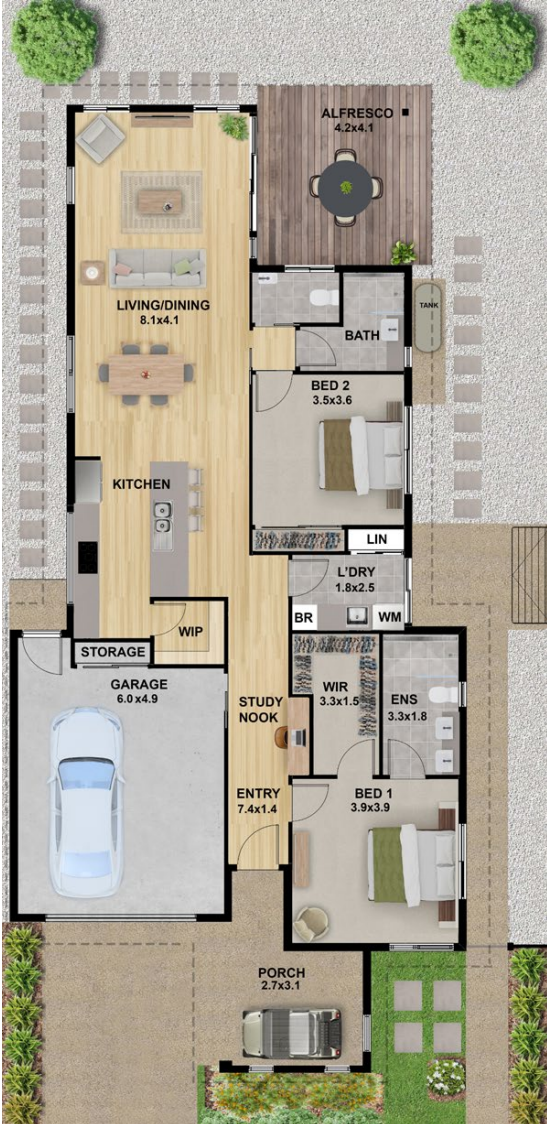


2 | 2 | 1.5

## AREAS

Living	131.1m <sup>2</sup>
Porch	11.9m <sup>2</sup>
Alfresco	17.6m <sup>2</sup>
Garage	34.1m <sup>2</sup>
Total	194.7m <sup>2</sup>

Typical Lot Size 13m x 27m



Not to scale. Floor plans and illustrations are intended as a visual aid and are indicative only. Plans are subject to change and minor variations, including lot to lot landscape variations.

2 | 2 | 2

## AREAS

Living	141.5 m <sup>2</sup>
Porch	11.8 m <sup>2</sup>
Alfresco	17.3 m <sup>2</sup>
Garage	43.2 m <sup>2</sup>
Total	213.8 m <sup>2</sup>

Typical Lot Size 13m x 27m



Not to scale. Floor plans and illustrations are intended as a visual aid and are indicative only. Plans are subject to change and minor variations, including lot to lot landscape variations.



# Moonah



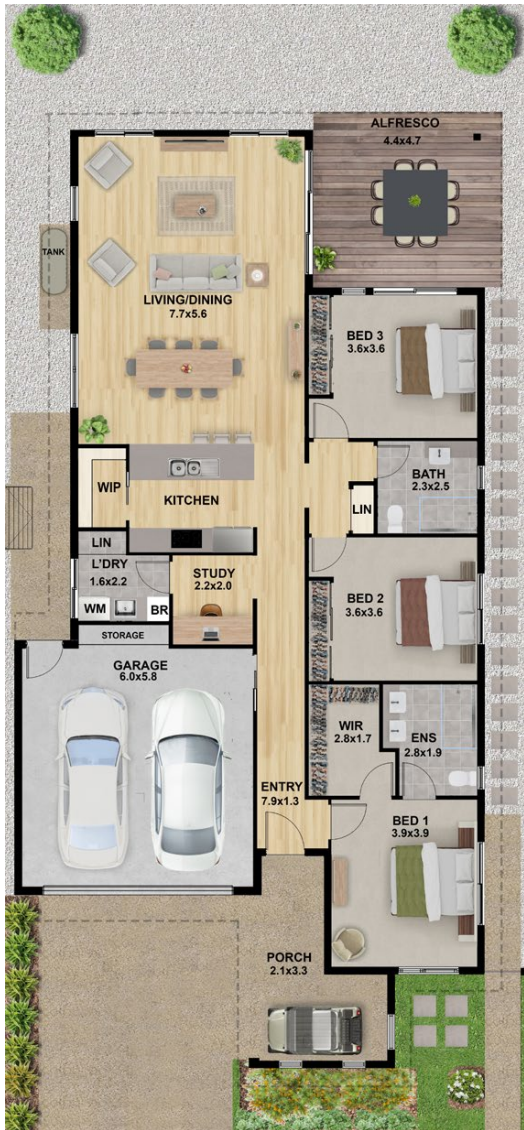
3 | 2 | 1 | 2

## AREAS

Living	157.7m <sup>2</sup>
Porch	12.6m <sup>2</sup>
Alfresco	20.9m <sup>2</sup>
Garage	39.9m <sup>2</sup>
Total	231.1m <sup>2</sup>

Typical Lot Size 13m x 28.5m

Not to scale. Floor plans and illustrations are intended as a visual aid and are indicative only. Plans are subject to change and minor variations, including lot to lot landscape variations.



# Moonah Freedom



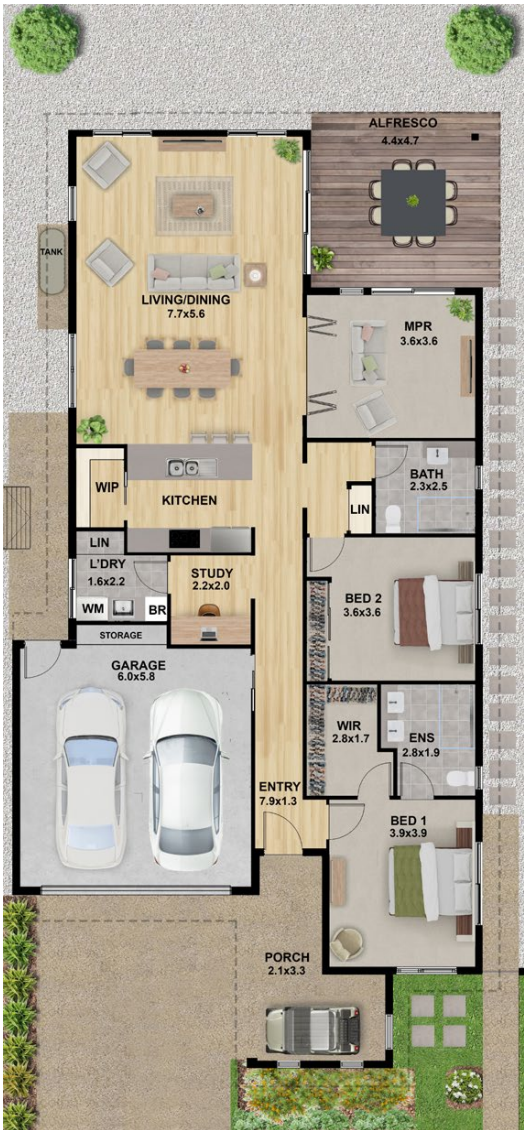
2 | 2 | 1 | 2

## AREAS

Living	157.7m <sup>2</sup>
Porch	12.6m <sup>2</sup>
Alfresco	20.9m <sup>2</sup>
Garage	39.9m <sup>2</sup>
Total	231.1m <sup>2</sup>

Typical Lot Size 13m x 28.5m

Not to scale. Floor plans and illustrations are intended as a visual aid and are indicative only. Plans are subject to change and minor variations, including lot to lot landscape variations.





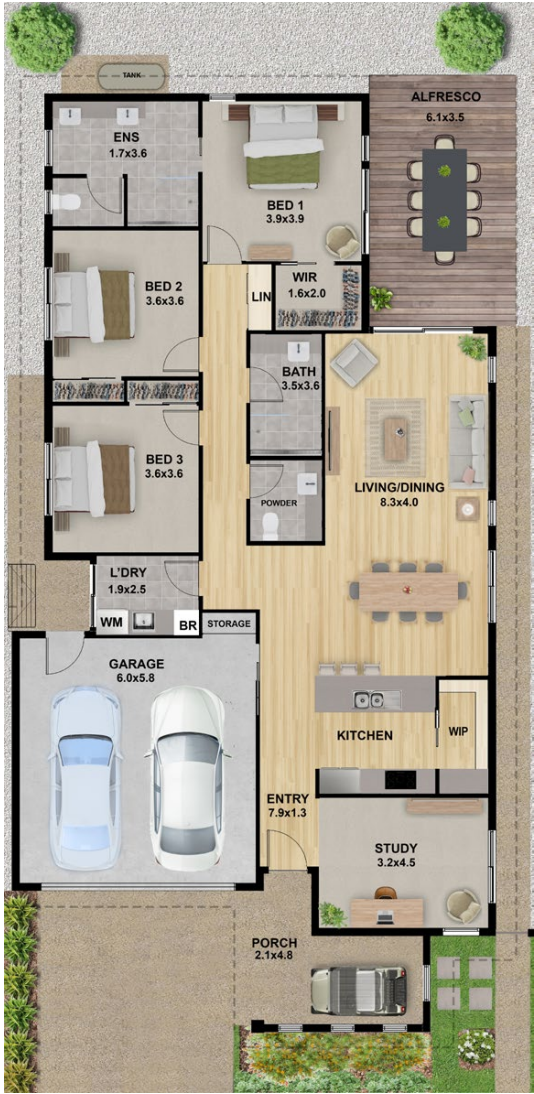


3 | 2 | 1 | 2

## AREAS

Living	168.5m <sup>2</sup>
Porch	13.1m <sup>2</sup>
Alfresco	22.0m <sup>2</sup>
Garage	38.4m <sup>2</sup>
Total	242.0m <sup>2</sup>

Typical Lot Size 13m x 27m



Bendigo Fields Country Club will feature a new range of homes, architecturally designed inside and out, to meet both the needs of retirees and expectations of modern 2020's living. The Platinum Range offers practical, open plan designs that make good use of space and flexibility of living.

Homes will be completely fitted out with all necessary inclusions ready to enjoy, in a contemporary and well branded styling. Showing friends and relatives your new home will be a pleasure.

All designs have either a light or dark external colour palette and three internal colour palettes to choose from.

Refer to separate inclusions list and colour palette for full details.

Not to scale. Floor plans and illustrations are intended as a visual aid and are indicative only. Plans are subject to change and minor variations, including lot to lot landscape variations.



# Imagine the Possibilities

Country Club Living financial arrangements allow you to enjoy luxury living whilst freeing up a cash nest egg at the same time.

Spend more time and money on the things you enjoy... whether it be travel, sports, hobbies, new furniture, a new car or whatever you decide.

***It's your retirement, so why not enjoy it to the full!***



## Creating Great Retirement Communities

Since 1990

Country Club Living has over 30 years' experience in the retirement village sector. As one of the largest family owned retirement living businesses in Australia, we provide quality retirement communities for independent living for over 55s and are located in various highly convenient and well serviced regional areas.

Our current portfolio is around 1200 occupied villas and apartments across eight vibrant communities, with several other new villages in the planning process.

As a family operated business, we understand and honour the importance

of family and friends in the lives and decisions of our residents. This is reflected in our approach to planning, selling and operating our villages. You will enjoy peace of mind, as will your family.

We take a more personal approach to our relationships with residents than some of our corporate competitors and respect the fact that our villages are the residents' home living environment.

Your lifestyle, safety and future is our concern. Our residents are also safely protected under the Retirement Villages Act.

**“ Now it's Time to  
Enjoy the Lifestyle  
You Deserve ”**

**COUNTRY CLUB**  
L I V I N G





The quaint country township of Strathfieldsaye blends the location's rural ambience with the convenience of the major regional city of Bendigo being close by. Bendigo Fields is located within a kilometre of Strathfieldsaye's main street and shopping area, featuring supermarket, medical centre, pharmacy, hotel and other amenities to satisfy daily necessities.

## Bendigo Fields Country Club

100 Emu Creek Road , Strathfieldsaye, VIC, 3551

[bf.sales@countryclubliving.com.au](mailto:bf.sales@countryclubliving.com.au)

[www.bendigofields.com.au](http://www.bendigofields.com.au)

Sales Enquiries: **1800 467 227**

**COUNTRY CLUB**  
L I V I N G

TEN VILLAGES NATIONALLY  
INCLUDING EIGHT IN VICTORIA

Please Note: The information in this brochure has been prepared with care for accuracy at the time and is subject to change without notice. Information is a general guide and some services, facilities, building designs and building materials vary between villages. This document does not form part of the contract. Prospective purchasers should obtain independent legal advice prior to signing contractual documents. For illustrative purposes, some images shown may not have been captured at this village.